



Vertical Plate Filter



Fast Start-Up:

- Available skid-mounted with pump, motor and interconnecting pipe

Compact

- Occupies minimum floor space

Low Cost Operation:

- Low initial cost
- Easy and quick to clean -- cleaning time reduced

Engineered for Reliable Operation:

- Unique rigid filter plate for maximum clarity and long filter media life
- High flow rate per square foot
- Totally enclosed filtration -- no leaking or evaporation
- Uses filter aids to the best possible advantage
- Unmatched end product quality for the price

Vertical Plate, Self-Cleaning Filter with Wet or Dry Cake Discharge

© 2000 Sparkler Filters, Inc.

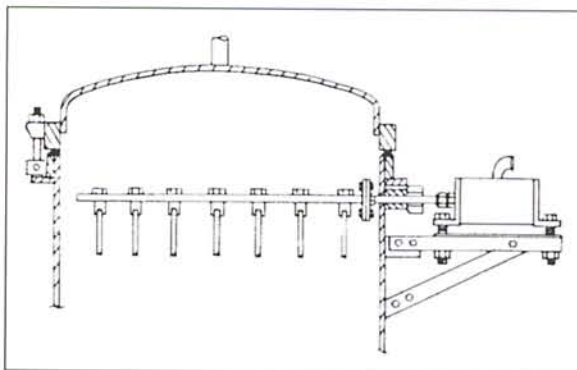
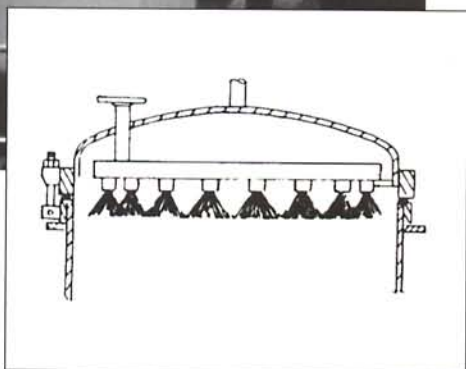
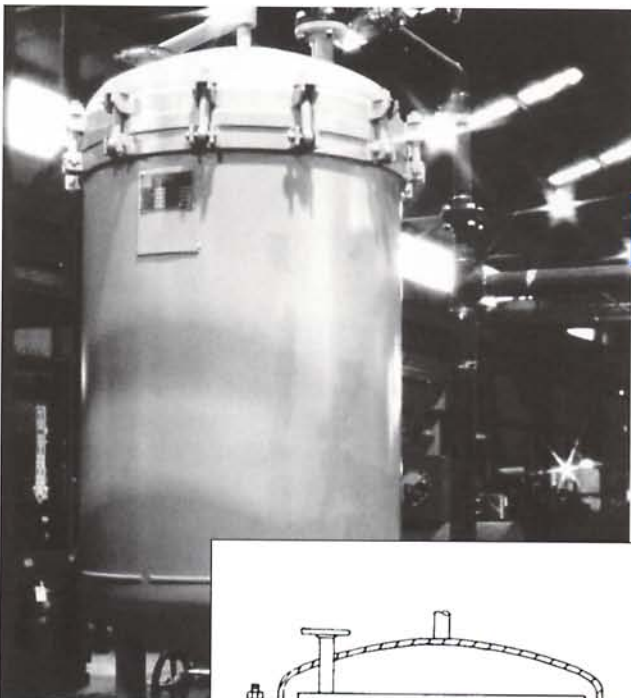
EXTREMELY VERSATILE

The Sparkler VF Filter can be easily adapted to achieve a variety of filtration results in a wide range of process applications. It is suitable for wet or dry cake discharge and available for manual, semi-automatic or fully automatic operation. In addition, the basic equipment may be furnished with any of the accessories listed below.



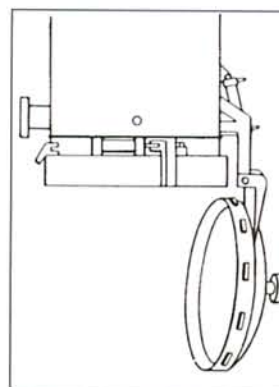
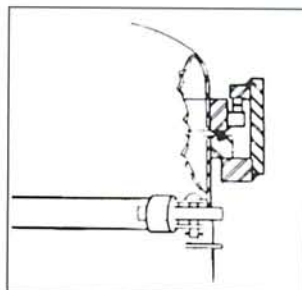
SELF CLEANING

The VF Filter plates may be cleaned without opening the filter vessel using fixed overhead sluice, oscillating overhead sluice or vibration. Our filtration engineers are experienced and helpful in recommending the most efficient method to meet your process requirements.



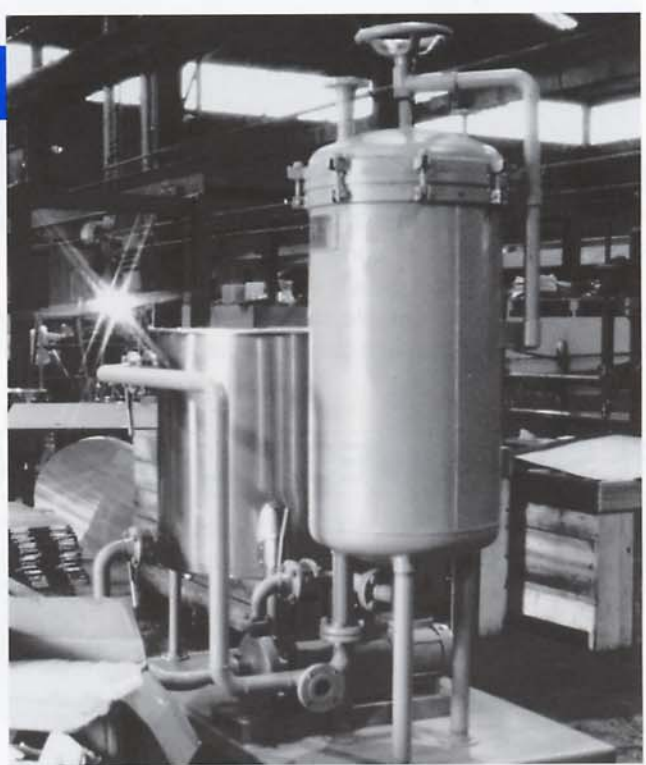
OTHER FEATURES

Hydraulically operated quick opening covers and bottom drop out doors are available on the Sparkler VF Filter. Steam coils or jackets are easily adapted. The Sparkler VF Filter is easily automated. All equipment and accessories can be furnished skid-mounted and ready for start-up complete with pump and motor, slurry feed equipment and tank.



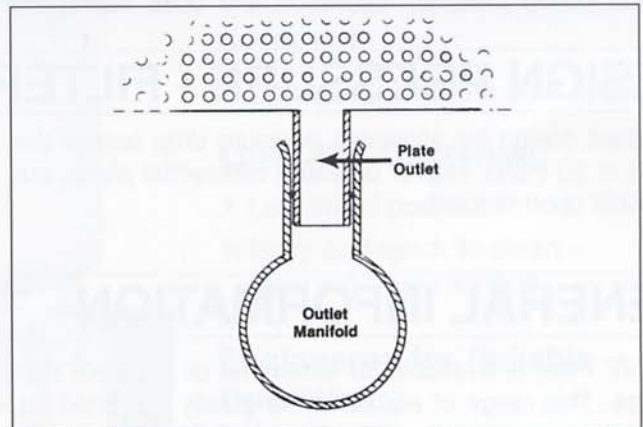
LOW INITIAL COST

Model No.	Plate Spacing	No. Plates	Cake Space Cu. Ft.	Actual Filter Area Ft.	Approx. Net. Wt. Lbs.
VF-A-38	4"	5	4.8	38.7	800
VF-A-50	3"	7	4.4	53.2	850
VF-A-75	2"	10	3.2	77.4	950
VF-B-70	4"	6	9.8	69.7	1300
VF-B-100	3"	9	8.3	98.8	1400
VF-B-140	2"	12	5.6	139.3	1550
VF-C-100	4"	8	13.5	107.6	1600
VF-C-150	3"	11	12.1	144.8	1800
VF-C-200	2"	16	9.0	215.3	2050
VF-D-145	4"	8	12.9	143.5	1800
VF-D-200	3"	11	16.0	192.9	2100
VF-D-290	2"	16	12.0	287.0	2400
VF-E-260	4"	11	32.8	262.2	3200
VF-E-350	3"	15	29.3	353.4	3500
VF-E-515	2"	21	21.5	514.6	4000
VF-F-330	4"	12	41.2	330.6	3700
VF-F-450	3"	17	37.8	454.2	4200
VF-F-660	2"	24	27.7	661.1	5000



SPARKLER'S EXCLUSIVE RIGID FILTER PLATE DESIGN

The exclusive rigid filter plate design is economical and designed for minimal maintenance. Higher flow rates per square foot of filtration area are available --- filter plates' greater internal free flow area; rigid construction; perforated sheets supporting the filter media reduces surface friction. Rigid non-warping plates provide for quicker and easier cake removal during the cleaning operation.



SPARKLER ALSO MANUFACTURES...

Horizontal Plate Filters - Supreme for all fine filtration.

MCRO Retractable Tank Filters - Heavy duty for wet or dry cake discharge

HRC Rotating Plate Filters - Dry Cake automatic discharge

HRS Rotating Plate Filters - Wet Cake automatic discharge

TRAP Filters - For removal of pipe scale and check filtration

Vacuum Heavy Duty Filters - Ideally suited for plant and swimming pool water filtration

Vertical Plate Self-Cleaning Filter with Wet or Dry Cake Discharge



ENGINEERING DATA

MATERIALS OF CONSTRUCTION

Standard materials of construction include mild steel, 304 and 316 stainless steel. Inventories assure quick delivery. Materials such as elc, monel, hastelloys, titanium and nickel are not stocked, and delivery is subject to availability.

Standard equipment, if other than mild steel, unless noted will be furnished with all wetted parts of the material specified. Non-wetted parts, such as swing bolts, external tank supports, ect., are mild steel.

PRESSURE VESSEL DESIGN

Standard design pressure and test pressure as well as design temperature for standard materials are as follows:

Material	Design Pressure	Test Pressure	Design Temperature*
M.S.	60 PSIG	90 PSIG	650°F
Rubber Lined	60 PSIG	90 PSIG	650°F
304 S.S.	60 PSIG	105 PSIG	350°F
316 S.S.	60 PSIG	95 PSIG	350°F

*Design temperature refers to vessel design, not to gasket material.

Higher pressure vessels are available upon request. Standard vessels are built to A.S.M.E. specifications and include coded material. Inspection and code stamp are

included at no extra cost when required by state law. A.S.M.E. design is for non-nuclear service. Vessel design for this service is available upon special request.

DESIGN PRESSURE - FILTER PLATES

Standard design for allowable pressure drop across the plates is 50 PSID. Higher pressure differential plates are available upon request.

GENERAL INFORMATION

The VF Filter is available for either wet or dry cake discharge. This range of equipment is ideally designed for general process applications. Standard tank finish: Mill finish inside, paint outside, unless otherwise specified.

SPARKLER also manufactures a complete line of Horizontal Plate Filters, Vertical Plate Filters, Horizontal (dual position) Plate Filters, and Manual/Auto Nutsche Filters.



Filters Incorporated

Box 19 Conroe, Texas 77305-0019
Tel: 936/756-4471 Fax: 936/539-1165
www.sparklerfilters.com
Email: sales@sparklerfilters.com

Subsidiary: Sparkler International Ltd.
PO Box 6042 4000 HA Tiel Netherlands
Licensed manufacturing facilities in:
Conroe, Texas; England; Netherlands;
Spain; Italy; Japan; India; Mexico; Brazil
and Argentina.
Representatives throughout the United States,
Canada and the World.

FILTRATION ENGINEERING AND MANUFACTURING EXCLUSIVELY • SALES AND SERVICE